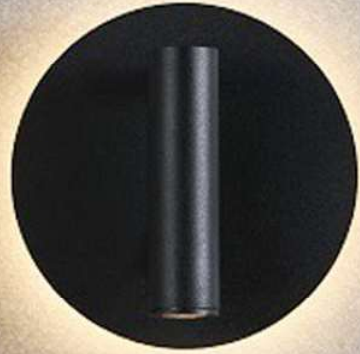


CENTURY  
LIGHTING



HOSPITALITY LIGHTING





## HB-8122/SQ

Power: 9W  
Material: Aluminum+PC  
Dimension: L130\*W130\*H75mm  
Chip: CREE XPE+SMD  
IP: IP20  
CRI: Ra>80  
Luminous Flux: 720lm  
Color: Black/White/Silver

## HB-8122/RD

Power: 9W  
Material: Aluminum+PC  
Dimension:  $\phi$ 140\*75mm  
Chip: CREE XPE+SMD  
IP: IP20  
CRI: Ra>80  
Luminous Flux: 720lm  
Color: Black/White/Silver



### HB-8212/SQ

Power: 3W+6W  
Material: Die-Casting Aluminum+PC  
Dimension: L125\*W130\*H50mm  
Chip: CREE XBD+Epistar SMD 5730  
IP: IP20  
CRI: Ra>80  
Luminous Flux: 720lm  
Color: Black/White/Silver



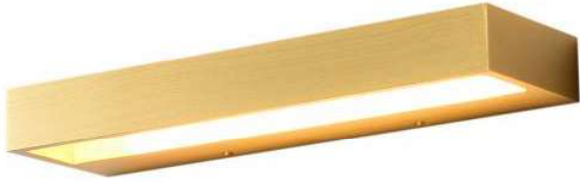
### HB-8212/RD

Power: 3W+6W  
Material: Die-Casting Aluminum+PC  
Dimension: L125\*W130\*H50mm  
Chip: CREE XBD+Epistar SMD 5730  
IP: IP20  
CRI: Ra>80  
Luminous Flux: 720lm  
Color: Black/White/Silver



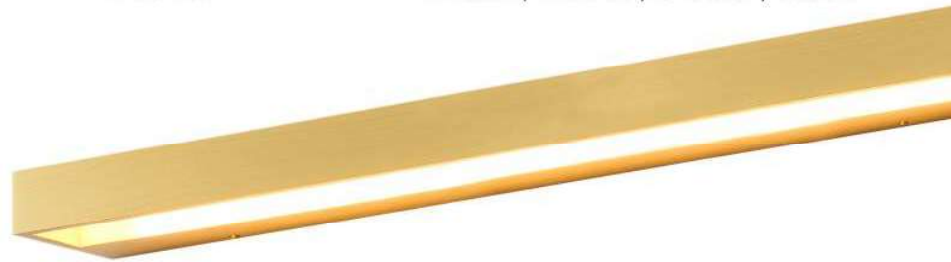
### HB-8114

Power: 3W  
Material: Aluminum+PC  
Dimension: L110\*W60\*H40mm  
Chip: CREE XBD  
IP: IP20  
CRI: Ra>80  
Luminous Flux: 240lm  
Color: Black/White/Silver



### HB-8116

Power: 12W  
Material: Aluminum  
Dimension: L300\*W90\*H35mm  
Chip: Epistar SMD 2835  
IP: IP20  
CRI: Ra>80  
Luminous Flux: 960lm  
Color: Black/White/Silver/Gold



### HB-8116

Power: 24W  
Material: Aluminum  
Dimension: L600\*W90\*H35mm  
Chip: Epistar SMD 2835  
IP: IP20  
CRI: Ra>80  
Luminous Flux: 1920lm  
Color: Black/White/Silver/Gold



### HB-8116

Power: 36W  
Material: Aluminum  
Dimension: L900\*W90\*H35mm  
Chip: Epistar SMD 2835  
IP: IP20  
CRI: Ra>80  
Luminous Flux: 2880lm  
Color: Black/White/Silver/Gold



### HB-8160

Power: 2\*3W  
 Material: Aluminum+PC  
 Dimension: L305\*W70\*H65mm  
 Chip: CREE XPE  
 IP: IP20  
 CRI: Ra>80  
 Luminous Flux: 480lm  
 Color: Black/White/Silver



### HB-8125

Power: 3W  
 Material: Aluminum+PC  
 Dimension: L75\*W180\*H70mm  
 Chip: CREE XPE  
 IP: IP20  
 CRI: Ra>80  
 Luminous Flux: 240lm  
 Color: Black/White/Silver



### HB-8109

Power: 2\*4W  
 Material: Aluminum+Glass  
 Dimension:  $\phi$ 72\*H180mm  
 Chip: Epistar COB  
 IP: IP20  
 CRI: Ra>80  
 Luminous Flux: 640lm  
 Color: Black/White/Silver/Gold



### HB-8113

Power: 8W  
 Material: Aluminum+PC  
 Dimension: L130\*W70\*H100mm  
 Chip: Epistar COB  
 IP: IP20  
 CRI: Ra>80  
 Luminous Flux: 640lm  
 Color: Black/White/Silver



### HB-8113

Power: 2\*8W  
 Material: Aluminum+PC  
 Dimension: L220\*W135\*H100mm  
 Chip: Epistar COB  
 IP: IP20  
 CRI: Ra>80  
 Luminous Flux: 1280lm  
 Color: Black/White/Silver



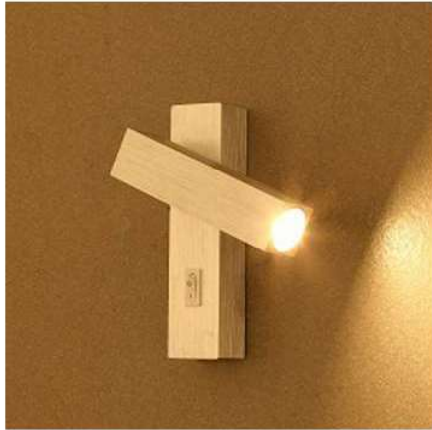
### HB-8113

Power: 3\*8W  
 Material: Aluminum+PC  
 Dimension: L350\*W135\*H100mm  
 Chip: Epistar COB  
 IP: IP20  
 CRI: Ra>80  
 Luminous Flux: 1920lm  
 Color: Black/White/Silver



### HB-8113

Power: 4\*8W  
 Material: Aluminum+PC  
 Dimension: L480\*W135\*H100mm  
 Chip: Epistar COB  
 IP: IP20  
 CRI: Ra>80  
 Luminous Flux: 2560lm  
 Color: Black/White/Silver



### HB-8169

Power: 3W  
Material: Aluminum+PC  
Dimension: L35\*W75\*H142mm  
Chip: CREE XPE  
IP: IP20  
CRI: Ra>80  
Luminous Flux: 240lm  
Color: Black/White/Silver



### HB-IS3013

Power: 6W  
Material: Aluminum+PC  
Dimension:  $\phi$ 160\*H60mm  
Chip: Epistar COB  
IP: IP20  
CRI: Ra>80  
Luminous Flux: 480lm  
Color: Black/White/Silver/Gold



### HB-1459/S

Power: 6W  
Material: Aluminum+PC  
Dimension: L70\*W85\*H305mm  
Chip: Epistar COB  
IP: IP20  
CRI: Ra>80  
Luminous Flux: 480lm  
Color: Black/White/Silver





**HB-B8117**

Power: 6W  
 Material: Aluminum+PC  
 Dimension:  $\phi$ 135\*H31mm  
 Chip: Epistar SMD 2835  
 IP: IP20  
 CRI: Ra>80  
 Luminous Flux: 480lm  
 Color: Black/White/Silver

**HB-B8117**

Power: 12W  
 Material: Aluminum+PC  
 Dimension:  $\phi$ 180\*H45mm  
 Chip: Epistar SMD 2835  
 IP: IP20  
 CRI: Ra>80  
 Luminous Flux: 960lm  
 Color: Black/White/Silver

**HB-B8117**

Power: 24W  
 Material: Aluminum+PC  
 Dimension:  $\phi$ 230\*H53mm  
 Chip: Epistar SMD 2835  
 IP: IP20  
 CRI: Ra>80  
 Luminous Flux: 1920lm  
 Color: Black/White/Silver



### HB-8120

Power: 2\*4W  
Material: Aluminum+PC  
Dimension: L200\*W120\*H45mm  
Chip: Epistar COB  
IP: IP20  
CRI: Ra>80  
Luminous Flux: 640lm  
Color: Black/White/Silver



### HB-1452

Power: 3W  
Material: Aluminum+PC  
Dimension: L160\*W65\*H90mm  
Chip: Epistar COB  
IP: IP20  
CRI: Ra>80  
Luminous Flux: 240lm  
Color: Black/White/Silver



### HB-A1428

Power: 3W  
Material: Aluminum+PC  
Dimension: L160\*W100\*H100mm  
Chip: Epistar COB  
IP: IP20  
CRI: Ra>80  
Luminous Flux: 240lm  
Color: Black/White/Silver



**HB-A8117**

Power: 6W  
 Material: Aluminum+PC  
 Dimension: L170\*W160\*H31mm  
 Chip: Epistar SMD 2835  
 IP: IP20  
 CRI: Ra>80  
 Luminous Flux: 480lm  
 Color: Black/White/Silver/Gold

**HB-A8117**

Power: 12W  
 Material: Aluminum+PC  
 Dimension: L225\*W210\*H45mm  
 Chip: Epistar SMD 2835  
 IP: IP20  
 CRI: Ra>80  
 Luminous Flux: 960lm  
 Color: Black/White/Silver/Gold

**HB-A8117**

Power: 24W  
 Material: Aluminum+PC  
 Dimension: L280\*W265\*H53mm  
 Chip: Epistar SMD 2835  
 IP: IP20  
 CRI: Ra>80  
 Luminous Flux: 1920lm  
 Color: Black/White/Silver/Gold



### HB-3011

Power: 6W  
Material: Die-Casting Aluminum+PC  
Dimension: L215\*W153\*H55mm  
Chip: Epistar SMD 5730  
IP: IP20  
CRI: Ra>80  
Luminous Flux: 480lm  
Color: Black/White/Silver



### HB-8152

Power: 6W  
Material: Aluminum+PC  
Dimension:  $\phi$ 125\*H85mm  
Chip: Epistar SMD 5730  
IP: IP20  
CRI: Ra>80  
Luminous Flux: 480lm  
Color: Black/White/Silver



### HB-8165

Power: 3W  
Material: Aluminum+PC  
Dimension: L50\*W68\*H155mm  
Chip: CREE XPE  
IP: IP20  
CRI: Ra>80  
Luminous Flux: 240lm  
Color: Black/White/Silver



### HB-A1444/RD

Power: 6W  
 Material: Iron+PC  
 Dimension: L225\*W160\*H53mm  
 Chip: Epistar SMD 5730  
 IP: IP20  
 CRI: Ra>80  
 Luminous Flux: 480lm  
 Color: Black/White/Silver

### HB-A1444/SQ

Power: 6W  
 Material: Iron+PC  
 Dimension: L225\*W150\*H53mm  
 Chip: Epistar SMD 5730  
 IP: IP20  
 CRI: Ra>80  
 Luminous Flux: 480lm  
 Color: Black/White/Silver



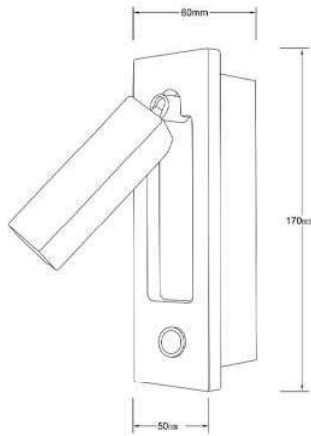
### HB-8142

Power: 6W  
 Material: Aluminum+PC  
 Dimension: L120\*W90\*H80mm  
 Chip: Epistar SMD 5730  
 IP: IP20  
 CRI: Ra>80  
 Luminous Flux: 480lm  
 Color: Black/White/Silver



### HB-8167

Power: 3W  
 Material: Aluminum+PC  
 Dimension: L42\*W45\*H200mm  
 Chip: CREE XPE  
 IP: IP20  
 CRI: Ra>80  
 Luminous Flux: 240lm  
 Color: Black/White/Silver



### HB-8173

Power: 3W  
 Material: Aluminum+PC  
 Dimension: L50\*W60\*H170mm  
 Chip: CREE XPE  
 IP: IP20  
 CRI: Ra>80  
 Luminous Flux: 240lm  
 Color: Black/White/Silver



## HB-8115

Power: 6W  
 Material: Aluminum  
 Dimension: L150\*W68\*H50mm  
 Chip: Epistar SMD 5730  
 IP: IP20  
 CRI: Ra>80  
 Luminous Flux: 480lm  
 Color: Black/White/Silver

## HB-8115

Power: 12W  
 Material: Aluminum  
 Dimension: L300\*68\*H50mm  
 Chip: Epistar SMD 5730  
 IP: IP20  
 CRI: Ra>80  
 Luminous Flux: 960lm  
 Color: Black/White/Silver





### HB-8094

Power: 12W  
 Material: Aluminum+PC  
 Dimension: L100\*W100\*H105mm  
 Chip: Epistar SMD 5730  
 IP: IP20  
 CRI: Ra>80  
 Luminous Flux: 960lm  
 Color: Black/White/Silver



### HB-8095

Power: 12W  
 Material: Aluminum+PC  
 Dimension: L100\*W100\*H110mm  
 Chip: Epistar SMD 5730  
 IP: IP20  
 CRI: Ra>80  
 Luminous Flux: 960lm  
 Color: Black/White/Silver



### HB-8096

Power: 2\*6W  
 Material: Aluminum+Glass  
 Dimension: L180\*W180\*H103mm  
 Chip: Epistar COB  
 IP: IP20  
 CRI: Ra>80  
 Luminous Flux: 960lm  
 Color: Black/White/Silver





## HB-8254

Power: 3W  
Material: Aluminum+PC  
Dimension:  $\phi 120 * H90\text{mm}$   
Chip: CREE XPE  
IP: IP20  
CRI: Ra>80  
Luminous Flux: 240lm  
Color: Black+Gold





## HB-8265

Power: 3W  
Material: Die-Casting Aluminum+PC  
Dimension: L139\*W30\*H170mm  
Chip: CREE XPE  
IP: IP20  
CRI: Ra>80  
Luminous Flux: 240lm  
Color: Black+Gold





## HB-8267

Power:	3W
Material:	Aluminum+PC
Dimension:	L50*W132*H90mm
Chip:	CREE XPE
IP:	IP20
CRI:	Ra>80
Luminous Flux:	240lm
Color:	Black+Gold/Black





### HB-8179

Power: 3W+8W  
Material: Aluminum+PC  
Dimension: L160\*W180\*H93mm  
Chip: CREE XBD+Epistar SMD 5730  
IP: IP20  
CRI: Ra>80  
Luminous Flux: 880lm  
Color: Black/White/Silver



### HB-8178/S

Power: 3W+6W  
Material: Aluminum+PC  
Dimension: L106\*W152\*H100mm  
Chip: CREE XBD+Epistar SMD 5730  
IP: IP20  
CRI: Ra>80  
Luminous Flux: 720lm  
Color: Black/White/Silver



### HB-8177

Power: 3W+6W  
Material: Aluminum+PC  
Dimension: L240\*W130\*H80mm  
Chip: CREE XBD+Epistar SMD 5730  
IP: IP20  
CRI: Ra>80  
Luminous Flux: 720lm  
Color: Black/White/Silver

## HB-8124

Power: 6W  
Material: Aluminum+PC  
Dimension: L120\*W120\*H130mm  
Chip: Epistar SMD 5730  
IP: IP20  
CRI: Ra>80  
Luminous Flux: 480lm  
Color: Black/White/Silver





### HB-8166

Power: 3W  
Material: Aluminum+PC  
Dimension: L80\*W65\*H190mm  
Chip: CREE XPE  
IP: IP20  
CRI: Ra>80  
Luminous Flux: 240lm  
Color: Black/White/Silver



### HB-8168

Power: 3W  
Material: Aluminum+PC  
Dimension: L80\*W75\*H125mm  
Chip: CREE XPE  
IP: IP20  
CRI: Ra>80  
Luminous Flux: 240lm  
Color: Black/White/Silver  
/Copper



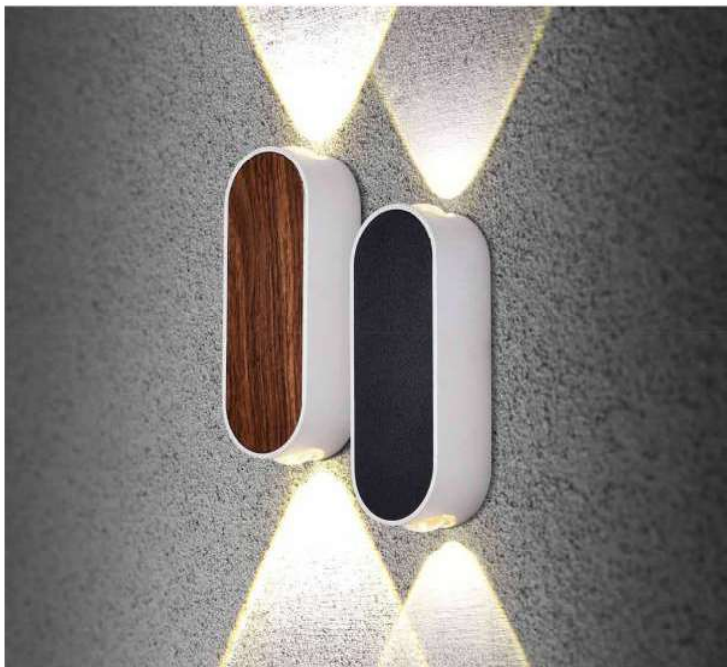
### HB-8134

Power: 3W  
Material: Aluminum+PC  
Dimension: L85\*W33\*H420mm  
Chip: Epistar COB  
IP: IP20  
CRI: Ra>80  
Luminous Flux: 240lm  
Color: Black/White/Silver



### HB-8103

Power: 2\*1.5W  
 Material: Aluminum+PC  
 Dimension: L100\*W110\*H35mm  
 Chip: CREE XBD  
 IP: IP20  
 CRI: Ra>80  
 Luminous Flux: 240lm  
 Color: Black/White/Silver



### HB-8104

Power: 2\*1.5W  
 Material: Aluminum+PC  
 Dimension: L135\*W50\*H35mm  
 Chip: CREE XBD  
 IP: IP20  
 CRI: Ra>80  
 Luminous Flux: 240lm  
 Color: Black/White/Silver



### HB-8162

Power: 2\*3W  
 Material: Aluminum+PC  
 Dimension: L70\*W85\*H205mm  
 Chip: Epistar COB  
 IP: IP20  
 CRI: Ra>80  
 Luminous Flux: 480lm  
 Color: Black/White/Silver



### HB-8172

Power: 3W  
Material: Aluminum+PC  
Dimension: L82\*W35\*H200mm  
Chip: CREE XPE  
IP: IP20  
CRI: Ra>80  
Luminous Flux: 240lm  
Color: Black/White/Silver



### HB-8189

Power: 3W  
Material: Die-Casting Aluminum+PC  
Dimension: L100\*W80\*H100mm  
Chip: Epistar SMD 5730  
IP: IP20  
CRI: Ra>80  
Luminous Flux: 240lm  
Color: Black/White/Silver



### HB-8199

Power: 6W  
Material: Aluminum+PC  
Dimension:  $\phi$ 80\*W150\*H100mm  
Chip: Epistar COB  
IP: IP20  
CRI: Ra>80  
Luminous Flux: 480lm  
Color: Black/White/Silver





### HB-8098

Power: 6W  
Material: Aluminum+PC  
Dimension: L170\*W80\*H34mm  
Chip: CREE XBD  
IP: IP20  
CRI: Ra>80  
Luminous Flux: 480lm  
Color: Black/White/Silver



### HB-8146

Power: 12W  
Material: Aluminum+PC  
Dimension: L150\*W120\*H175mm  
Chip: Epistar SMD 2835  
IP: IP20  
CRI: Ra>80  
Luminous Flux: 960lm  
Color: Black/White/Silver



### HB-8180

Power: 3W+6W  
Material: Aluminum+PC  
Dimension: L95\*W170\*H90mm  
Chip: CREE XPE+Epistar SMD 5730  
IP: IP20  
CRI: Ra>80  
Luminous Flux: 720lm  
Color: Black/White/Silver

# HB-8213

Power: 3W+6W  
Material: Die-Casting Aluminum+PC  
Dimension: L120\*W200\*H48mm  
Chip: CREE XBD+Epistar SMD 5730  
IP: IP20  
CRI: Ra>80  
Luminous Flux: 720lm  
Color: Black/White/Silver/Copper





### HB-8206

Power: 3W  
 Material: Aluminum+PC  
 Dimension: L120\*W50\*H75mm  
 Chip: CREE XPE  
 IP: IP20  
 CRI: Ra>80  
 Luminous Flux: 240lm  
 Color: Black/White/Silver



### HB-8183

Power: 3W  
 Material: Aluminum+PC  
 Dimension: L50\*W65\*H189mm  
 Chip: Epistar COB  
 IP: IP20  
 CRI: Ra>80  
 Luminous Flux: 240lm  
 Color: Black/White/Silver



### HB-8220

Power: 3W  
 Material: Aluminum+PC  
 Dimension: L120\*W200\*H48mm  
 Chip: CREE XPE  
 IP: IP20  
 CRI: Ra>80  
 Luminous Flux: 240lm  
 Color: Black/White/Silver



### HB-8262

Power: 3W+6W  
Material: Aluminum+PC  
Dimension: L230\*W90\*H50mm  
Chip: CREE XPE+Epistar COB  
IP: IP20  
CRI: Ra>80  
Luminous Flux: 720lm  
Color: Black/White/Silver



### HB-8261

Power: 3W+6W  
Material: Aluminum+PC  
Dimension: L230\*W90\*H50mm  
Chip: CREE XPE+Epistar COB  
IP: IP20  
CRI: Ra>80  
Luminous Flux: 720lm  
Color: Black/White/Silver





## HB-A8223

Power:	3W+3W
Material:	Aluminum+PC
Dimension:	L150*W140*H120mm
Chip:	CREE XPE+Epistar SMD
IP:	IP20
CRI:	Ra>80
Luminous Flux:	480lm
Color:	Black/White/Silver



### HB-8171/RD

Power: 3W  
 Material: Aluminum+PC  
 Dimension:  $\phi 120 * H75mm$   
 Chip: CREE XPE  
 IP: IP20  
 CRI: Ra>80  
 Luminous Flux: 240lm  
 Color: Black/White/Silver

### HB-8171/SQ

Power: 3W  
 Material: Aluminum+PC  
 Dimension: L120\*W120\*H75mm  
 Chip: CREE XPE  
 IP: IP20  
 CRI: Ra>80  
 Luminous Flux: 240lm  
 Color: Black/White/Silver



| LED  
OUTDOOR WALL LAMP

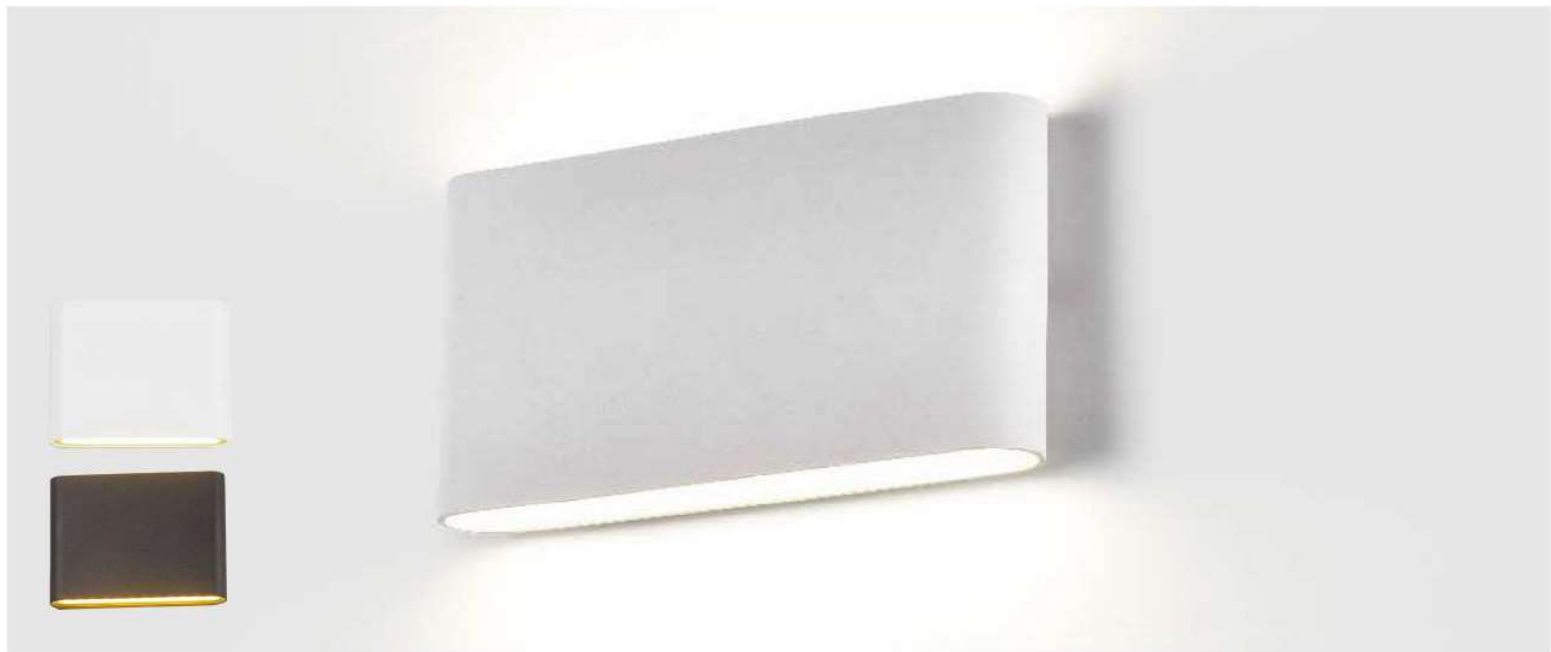


## HB-8102/M

Power: 6W  
Material: Die-Casting Aluminum+PC  
Dimension: L170\*W80\*H40mm  
Chip: CREE XBD  
IP: IP54  
CRI: Ra>80  
Luminous Flux: 480lm  
Color: Black/White/Silver







### HB-8107/S

Power: 2\*3W  
 Material: Die-Casting Aluminum+PC  
 Dimension: L113\*W90\*H28mm  
 Chip: Epistar SMD 5730  
 IP: IP54  
 CRI: Ra>80  
 Luminous Flux: 480lm  
 Color: Black/White/Silver

### HB-8107/L

Power: 2\*6W  
 Material: Die-Casting Aluminum+PC  
 Dimension: L175\*W90\*H28mm  
 Chip: Epistar SMD 5730  
 IP: IP54  
 CRI: Ra>80  
 Luminous Flux: 960lm  
 Color: Black/White/Silver



### HB-8015/S

Power: 3W  
 Material: Die-Casting Aluminum+PC  
 Dimension: L90\*W51\*H64mm  
 Chip: Epistar SMD 2835  
 IP: IP54  
 CRI: Ra>80  
 Luminous Flux: 240lm  
 Color: Black/White/Silver

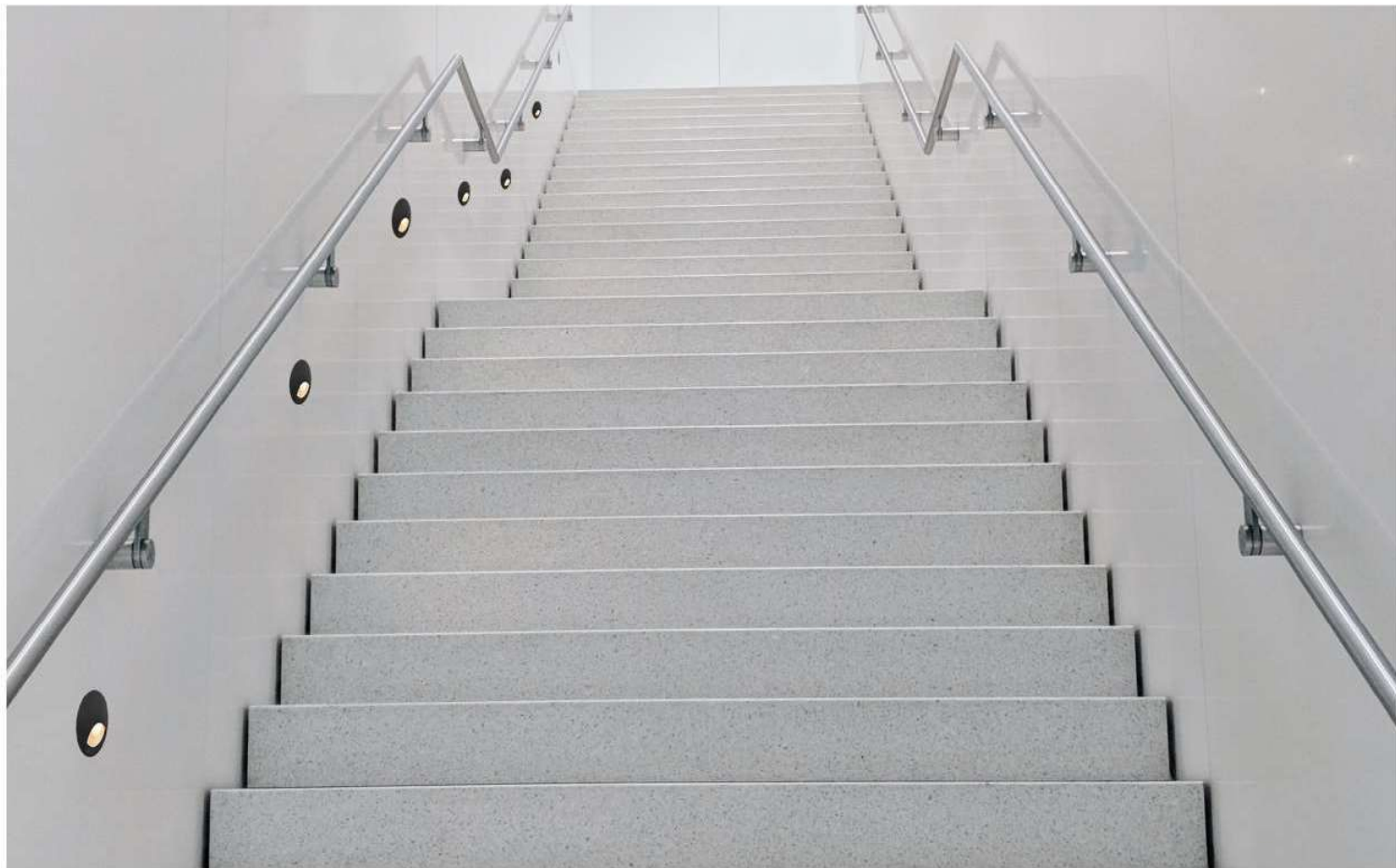
### HB-8015/L

Power: 3W  
 Material: Die-Casting Aluminum+PC  
 Dimension: L135\*W51\*H65mm  
 Chip: Epistar SMD 2835  
 IP: IP54  
 CRI: Ra>80  
 Luminous Flux: 240lm  
 Color: Black/White/Silver



## HB-8018

Power: 3W  
Material: Die-Casting Aluminum+Glass  
Dimension: L65\*W70\*H66mm  
Chip: Epistar SMD 5730  
IP: IP54  
CRI: Ra>80  
Luminous Flux: 240lm  
Color: Black/White/Silver



### HB-A4002



Power: 3W  
 Material: Aluminum+PC  
 Dimension: L65\*W70\*H66mm  
 Chip: CREE XBD  
 IP: IP65  
 CRI: Ra>80  
 Luminous Flux: 240lm  
 Color: Black/White/Silver

### HB-B4002

Power: 3W  
 Material: Aluminum+PC  
 Dimension:  $\phi$ 65\*H95mm  
 Chip: CREE XBD  
 IP: IP65  
 CRI: Ra>80  
 Luminous Flux: 240lm  
 Color: Black/White/Silver



### HB-C4002



Power: 3W  
 Material: Aluminum+PC  
 Dimension:  $\phi$ 65\*H95mm  
 Chip: CREE XBD  
 IP: IP65  
 CRI: Ra>80  
 Luminous Flux: 240lm  
 Color: Black/White/Silver



A3002



B3002



C3002

## HB-A3002 HB-B3002 HB-C3002

Power:	3W
Material:	Aluminum+PC
Dimension:	φ60*H85mm
Chip:	CREE COB
IP:	IP65
CRI:	Ra>80
Luminous Flux:	240lm
Color:	Black/White/Silver